

M113BK28HA INSTRUCTION



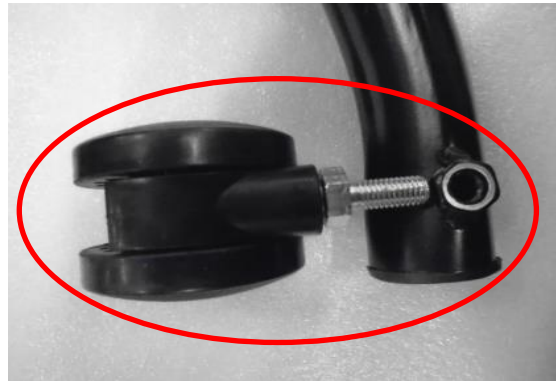
M113BK28HA
Unit Assembled



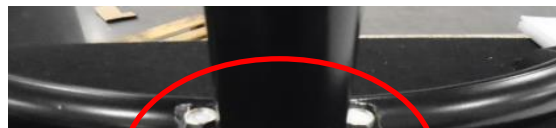
M113BK28HA
All Pieces of the unit Inside the box.

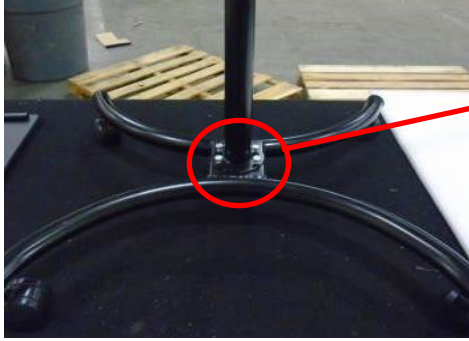


STEP 1

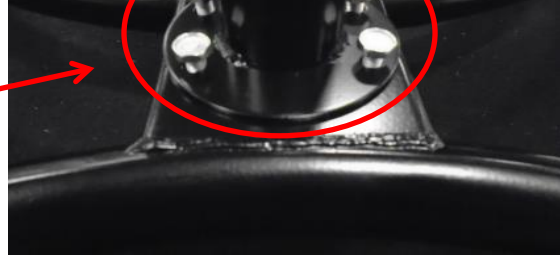


Bolts for the Wheels under





STEP 2

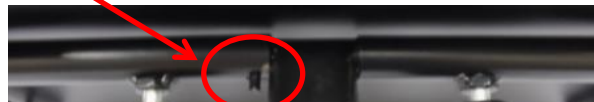
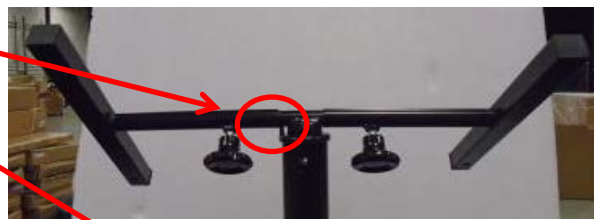
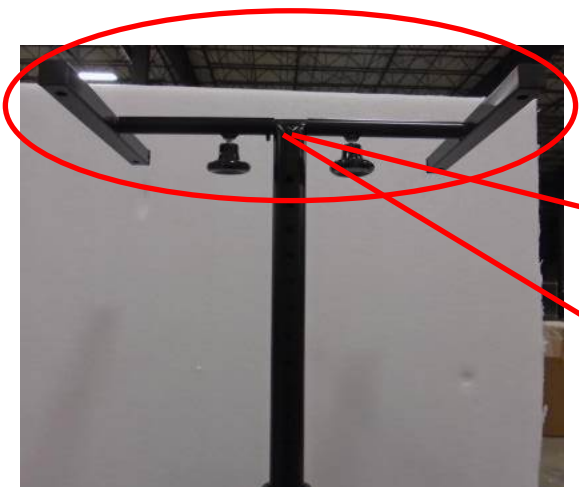


Screws to tighten the Pole



STEP 3
Extending the Pole (1). Plus the Long knob Screw.

STEP 4
Plastic Part Inside the Pole, has to be Aligned with the external Bolt attached to the Pole (1)

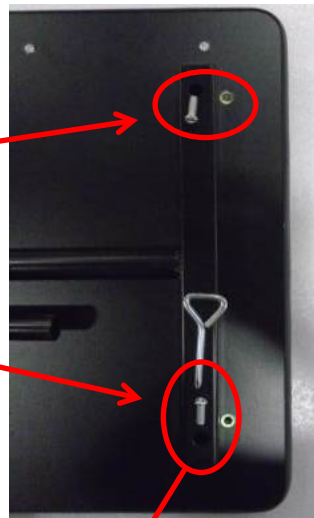




STEP 5
 Extended Pole with the 2 "T" for the Base of the Wooden Top, plus the 2 Screws to Tighten to the



STEP 6
 The Left "T" has a Clamp to Clip into the Pole Extended .



STEP 7
 Attahcing the 2 "T" to the Wooden Top. There is 4 Silver Screws with Lockwasher.

